

SQUARE TO ROUND TRANSITION ORDERING DIAGRAM

MATERIAL: CRS GALV. ALUM 304 S.S. 316 S.S.

GAUGE: _____ (STANDARD 22 GA.)

ROUND DIA - A: _____ SPIRAL FIT ROLLED EDGE ANGLE RING

SQUARE END - B: _____ SQUARE END - C: _____

SPECIFY FOR SQUARE END: I.D. (INNER DIAMETER) OR O.D. (OUTTER DIAMETER)

ANGEL IRON _____
SIZE _____
BOLT - HOLE PATTERN _____

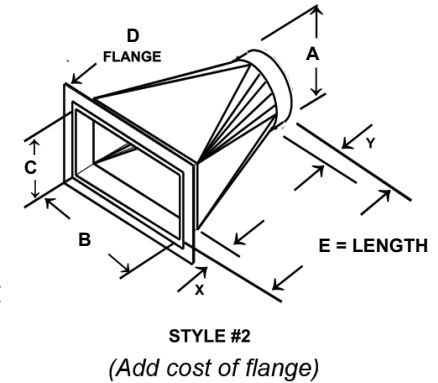
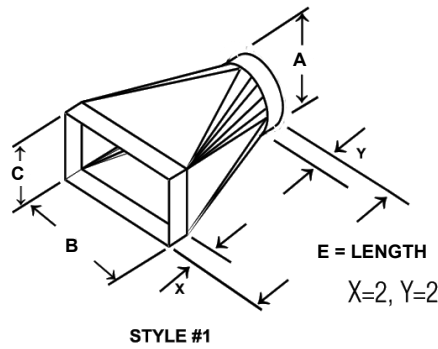
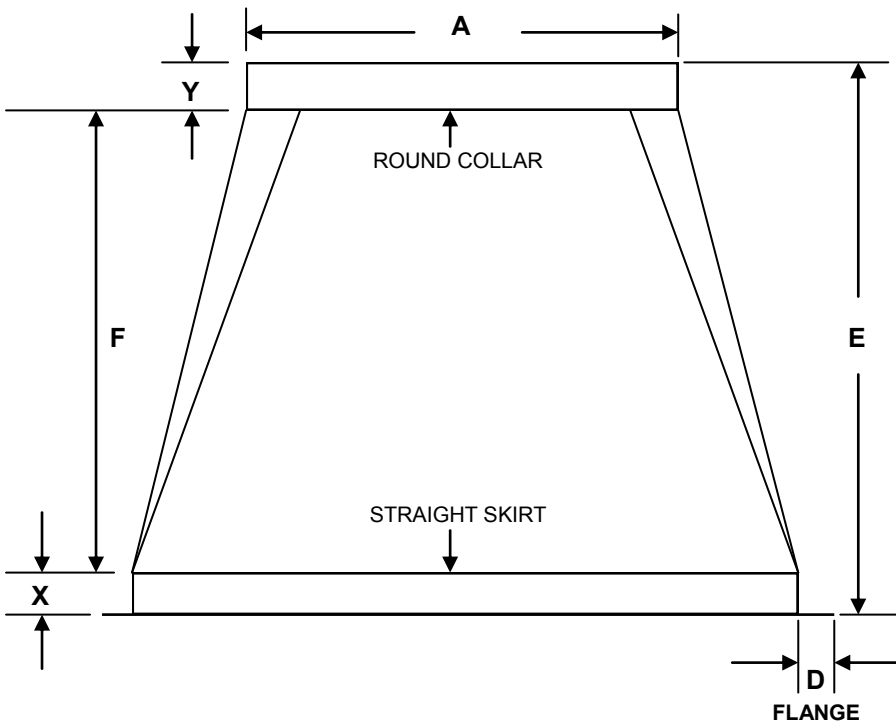
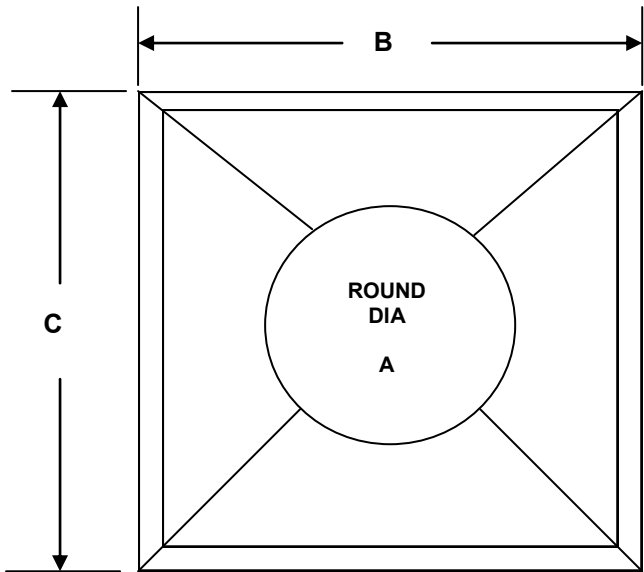
FLANGE - D: WIDTH" _____ (0 IF STRAIGHT)

OVERALL HEIGHT - E: _____

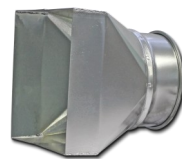
HEIGHT WITHOUT COLLAR & SKIRT - F: _____

STRAIGHT ON ROUND END - X: _____ (STANDARD WITH 2" RAW EDGE SKIRT)

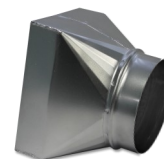
STRAIGHT ON SQUARE END - Y: _____ (STANDARD WITH 2" RAW EDGE COLLAR)



*NOTE: Minimum L = B x .75. If less, square to square transition will be provided.
7" minimum L allowable for Sq to Rd and 4" L minimum allowable for Sq to Sq.



ROUND ROLLED EDGE



ROUND RAW EDGE



**ROUND END FANGLE RING
SQUARE END FLANGE**